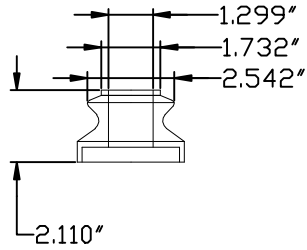
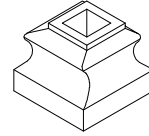
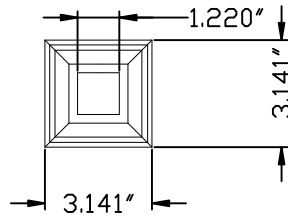


# Collar

Side View

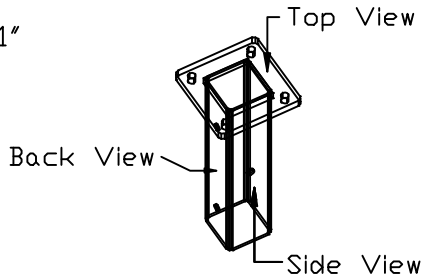
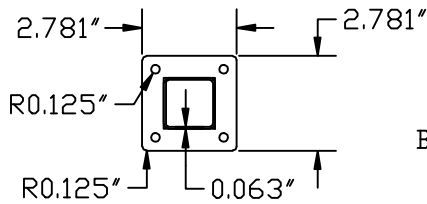


Top View

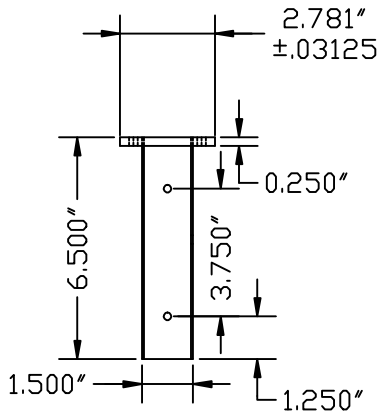


# Mounting Sleeve

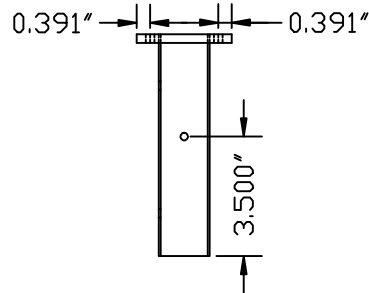
Top View



Back View



Side View



NOTE:1 9/32" holes - 4 required.

NOTE:2 5/16-18 threaded holes.

NOTE:3 Corners are rounded using a 1/8" radius.

Hardware bag:

4 pcs- #14x3" pan head phillips screws.

3 pcs - 5/16 18 x 3/8" socket head set screws.

1 pcs 5/32 allen wrench.



35280 Scio-Bowerston Road  
Bowerston, OH 44695-9731  
Phone (740) 269-4111 FAX (740) 269-9047  
This drawing is the property of L.J. Smith Co. Do not use or copy without permission from L.J. Smith.

|              |                         |          |
|--------------|-------------------------|----------|
| Drawing Name |                         |          |
| LI-NWLF5H    |                         |          |
| Date         | Scale                   | Drawn By |
| 06/24/11     | DO NOT SCALE            | BRR      |
| File Name    | DESTROY PREVIOUS PRINTS |          |
| LINWLF5H     | SHOP                    |          |